

H90/H90S PPT Presenter

User's Guide



Features

This guide describes how to use the digital PPT presenter. Be sure that you read this guide and understand its contents before using it.

It has red or green laser, Pg up, Pg down, black screen, slider/exit, hyperlink and other features. There are even customization keys.

The H90 is available in standard and air-mouse versions, which need run the computer aided software only when you want to change the key value of a customization key.

H90S is divided into three versions from low to high: **Digital Spot version**, **Spotlight version**, and **File-sharing** version. The computer aided software must be run before use.

The new functions added by H90s compared with H90 are as follows:

1. By using the following three digital scene modes, presenter operation is more convenient and powerful.



2. The traditional laser transmitter is still retained. We can choose which one to use.

3. File-sharing function: User can upload the local files into Internet server and display its URL on screen in the form of QR code. The participants can get the file by scanning the QR code with mobile phone.

4. We can set up a alarm timer before meeting. When the meeting is over, the presenter will alert us by vibrating. We can also check the remaining time at any time (it can be displayed by the presenter).

5. The receiver anti-lost function can help us not to forget unplugging the USB receiver after meeting.

6. The Full-time-markup function support users to draw line on screen at any time.

Operation Steps

Step 1: Plug the Receiver into USB Port

Pull out the receiver at the end of the presenter and plug it into the USB port of the computer.

Step 2: The Receiver Establish Connection with The Computer

If the receiver is plugged into a computer with Windows 10 or below for the first time, it needs to establish communication with the computer for several minutes, depending on the speed of the computer.

Step 3: Run the APP (compute aided software)

H90S needs to run the computer aided software before use, without running APP, H90S cannot support the advanced functions such as spotlight, magnifier, digital spot and alarm timer etc. While H90 only needs to run the software when changing the key value of customization key.

Most Windows computers without special restrictions will automatically download and run the computer aided software after the USB receiver is plugged in the USB port of computer (wait a few minutes for the first time).

However, we can only manually download and run the software in the following ways if doesn't run automatically

Step 4 : Turn on The Presenter

The switch of presenter lies on the bottom of body.

- A) The light will indicate the residual electricity. The greener means the more residual electricity, the redder means the less residual electricity, and the red-light flashing means the power is out.
- B) The presenter vibrates means it have taken a correct connection with receiver and the icon of APP

change from  to .

If it doesn't display anything as well as vibration means the batteries died.

Run the Computer Aided Software (APP)

1. The APP Location

We can also download the APP from: <https://www.epddn.com/>

Or we can press and hold the key④ and turn on the presenter to open the website automatically.


2. Start the APP of Windows Version

2.1 Double-click to Run It

The APP of Windows need not be pre-installed before use. Just mouse double-click the “DigitalPresenterG2.exe”to run it. The APP will set a shortcut on desktop. it will run automatically at the next startup of computer.

If it doesn't work on early version of Windows7, please download and install [.Net framework 4.0](#) (click the blue word to enter the Microsoft download URL)

2.2 APP Setting and Quitting

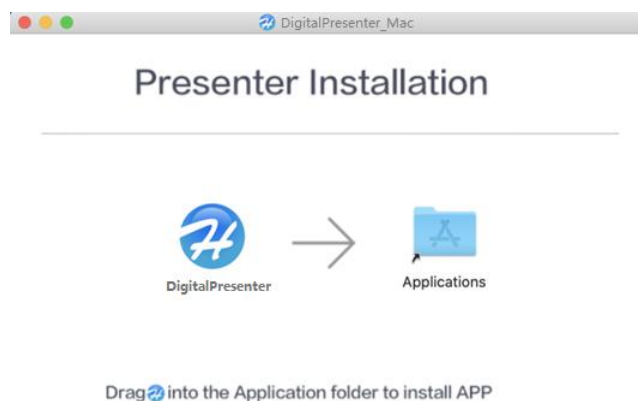
Click the icon  ,which lies in the tray of lower right corner of desktop, by the right mouse button to open the popup menu. We can choose to open the settings window or quit the APP. Click the icon by the left mouse button to open the settings window directly.

3. Start the APP of MacOS X Version

3.3.1 APP Installation

A) For the first time, download and double-click the file “DigitalPresenterG2_Mac.dmg”

B) Drag the icon “DigitalPresenterG2”into **Application** folder to install the APP.



Check: Open "Launchpad", There is an application  means installation is successful.

3.3.2 First Run in MacOS X

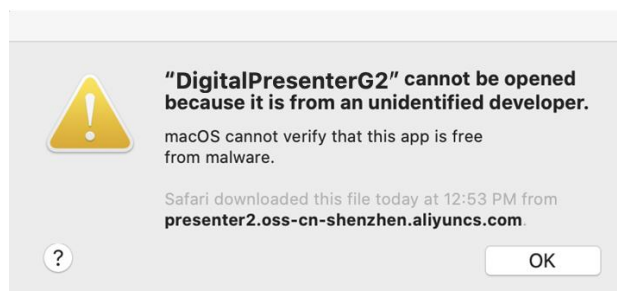
A) If Popup the Warning "File is corrupted"

We had better type "sudo SPCTL --master-disable" and then type Enter key in the Terminal window after downloading and then install it. This is due to MacOS X's security mechanism, which defines any software downloaded outside the Apple Store as insecure.

However, if we copy the downloaded file to the U-disk and then install it from the U-disk, this prompt will probably not appear.

B) If Popup the Warning "Open an app from an unidentified developer"

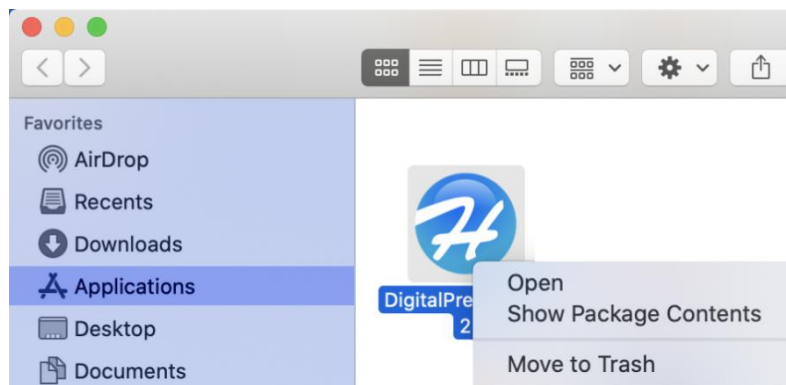
MacOS X has this prompt for any program that is not downloaded from the Apple Store. Just do the following steps for the first time.



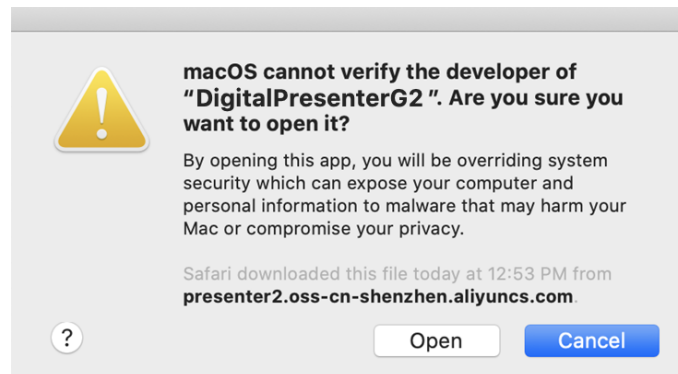
I) Click "Finder" , → "Applications". And find the icon .

II) Press and hold the key "control", and Click the icon .

Select "open" menu after the prompt window is popped up.

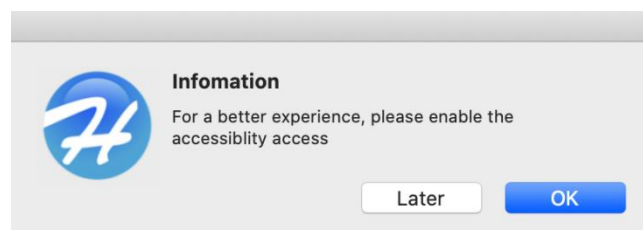


III) Click the "Open" button.



B) Pop-up Warning "enable accessibility access"

After clicking the APP icon in the "Launchpad", the following pop-up warning appears.

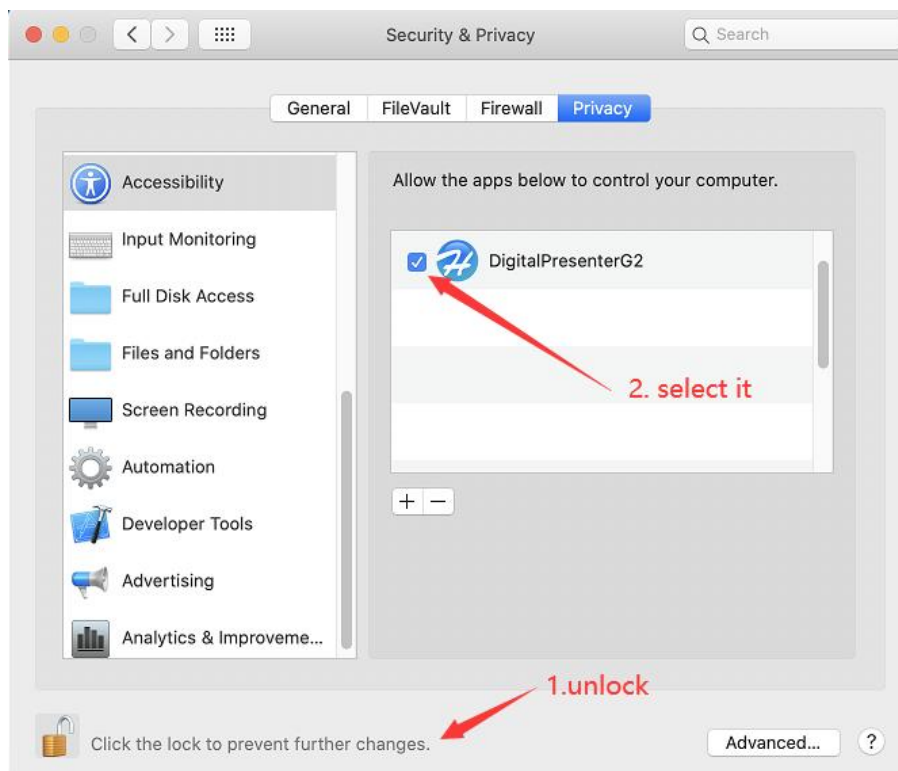


This is the permission required for the APP. it won't appear again after setting as follows.

I) Click "Later" that runs the software for this time. However, this warning will appear for every run.

II) Click "OK" and the following window appears.

We can also set it in "System Preference"-->"Security and Privacy"-->"Privacy"--> "**Accessibility** " at any time.



* Click the bottom part to unlock it(need to enter the account password).

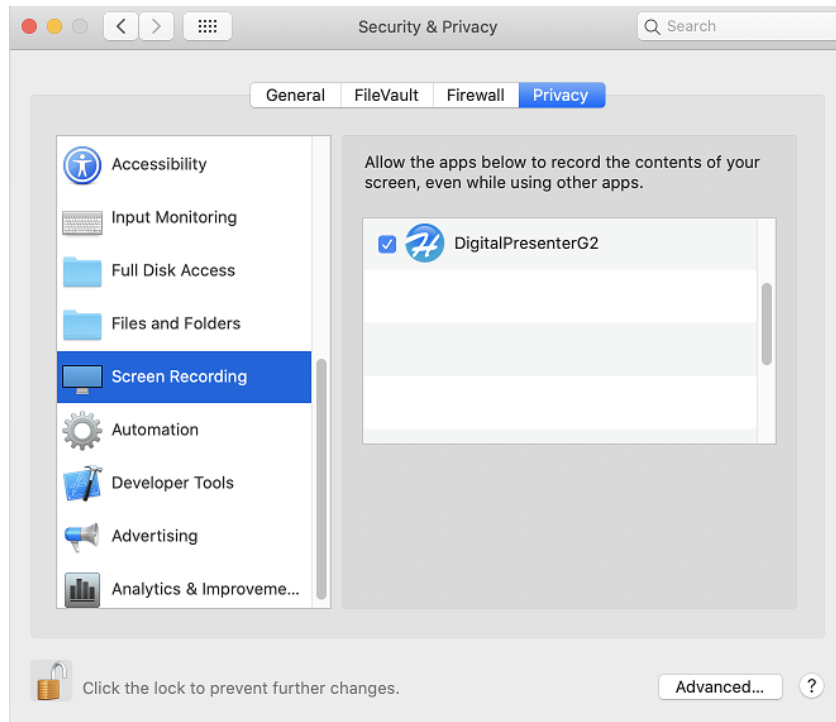
* Select the check box before APP icon.

* Click the bottom part to lock the setting again.

* Re-run the APP from launchpad.

If the APP runs on MacOS X10.15 or later, we need to turn on the "Screen Recording" permission, otherwise the magnifier scene will not work correctly.

"System Preferences"-->"security and privacy" -- > "Privacy"--> "Screen Recording"



3.3.3 APP Setting and Quitting

Click the icon, which lies in the corner of upper right corner of desktop, to open the settings windows or to quit the APP.



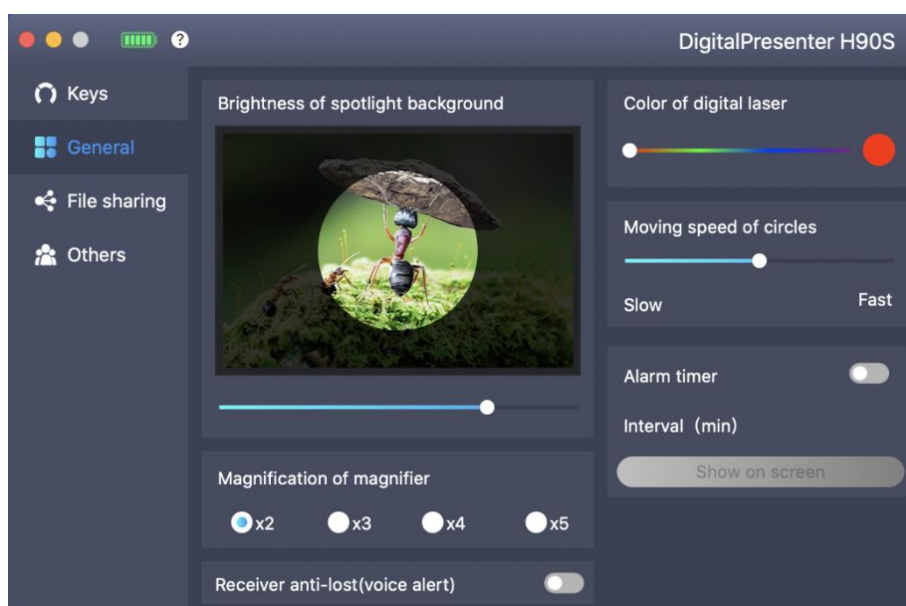
This is the icon of APP

APP Settings

1. Multilingual Support

The APP displays different language according to the base language of the operating system automatically. Chinese and English operating systems are supported currently.

2. General Settings



A) The white question mark icon in the title bar is the help icon. Click to open the help file. The help file is saved on the network server. Therefore, the computer should be able to connect to the Internet normally.

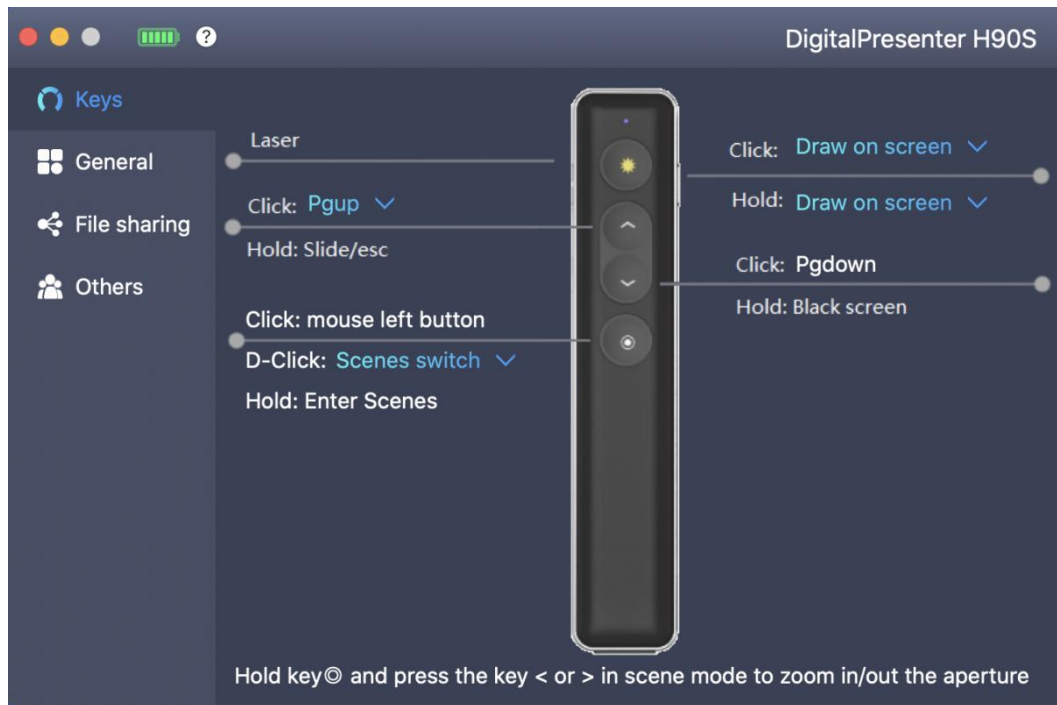
B) Receiver anti-lost : After the turn off the presenter or wireless disconnection for 20 seconds, and the receiver has not pulled out the USB port of the computer, the computer will play a voice to remind the user not to forget to pull out the receiver. Of course, only when the computer speaker is on.

C) Alarm timer : Input the alarm timer (maximum: 199 minutes) by keyboard.

The presenter will vibrate to alert us while timer is up. We can click the side key④ of presenter any time to view the remaining time of alarm timer.

“ Display on screen ”button : The countdown timer is displayed on the screen, and the music reminder will be played when the time is up (the computer speaker should be turned on). Even if we press the ESC key to exit the display, the timer will not stop timing. Unless the we turn off the timer. This function is suitable for timing of meeting break or examination.

3.Keys Settings



3.1 “D-Click ”Combo box

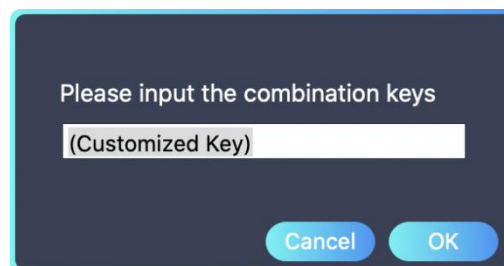
A) Scenes switch: Double click this key is to switch among **Spotlight**, **Magnifier** and **Digital spot**. (no mouse left double click function)

B) Mouse d-click : Selecting this item means that the "**Spotlight**" and "**Magnifier**" functions are forbidden. Press and hold this key will enter "**Digital spot**" function. double click this key is equivalent to the left mouse button.

C) Pgup / Pgdn key can be selected from four options: "Pgup / Pgdn, up/down, left/right, previous track /next track".

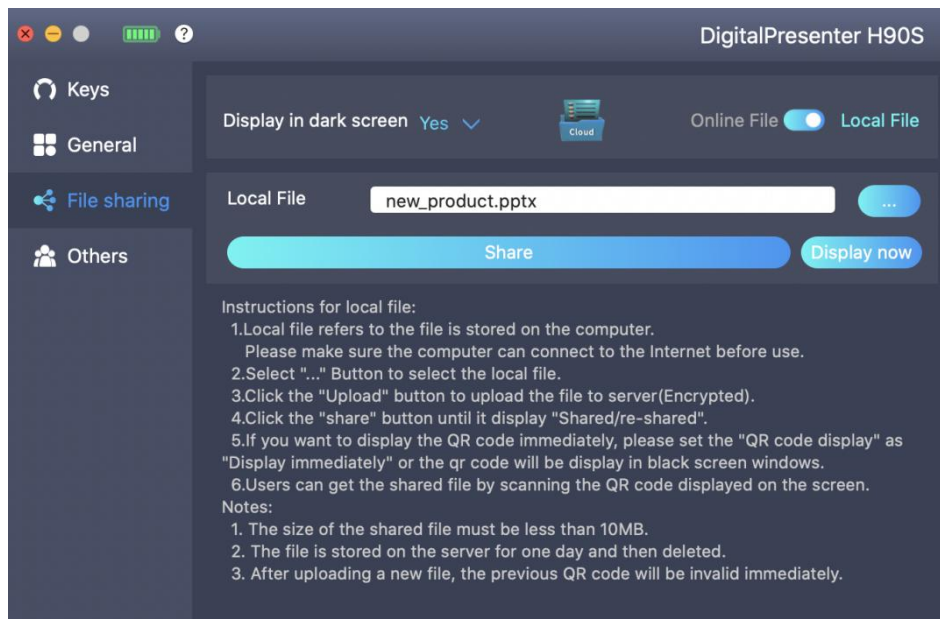
3.2 Selection of Customized Keys

Despite some preset key value items of popup menu, the most important item is “**Customized key**” by which we can define the key value as any keys on the keyboard. If you select this item, the following dialog box will pop up. At this time, just press the specific keys on the computer as we will.




Note: The self-defined key value is saved into presenter after setting. So, the key value remains unchanged until they are changed in APP.

4.File Sharing



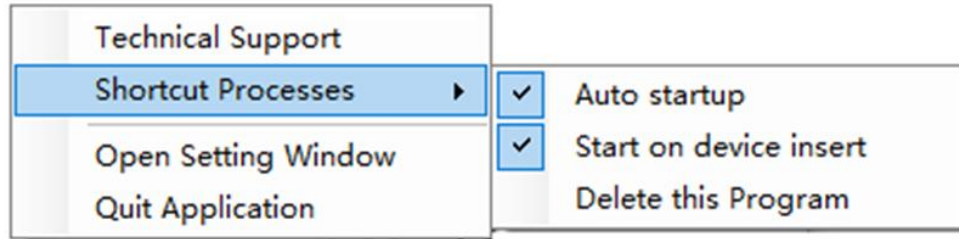
1. Please make sure that the computer has a correct connection with Internet.
2. Local file uploaded to the server is kept for only one day until it is deleted. We need not re-share the same file within a day, and the QR code is always valid even if change a computer.
3. Online file is the file that has been put on the Internet and can be accessed by others (password may be required). Users need to input the website address and password (if necessary). Then click the "share" button to complete the sharing.
4. The icon with folder shape is blue indicate that there is a shared file on the server. It is gray means no file is shared. Move the mouse over this icon to display the shared file name.
5. There are two ways to display QR Code (shared file):

A) display in dark screen :  Press and hold key ② to enter the black screen with QR code.

B) show now : Click the "show now" button to display the QR code on the computer screen immediately.

5. APP Menu of Windows Version

Right-click on the icon  in the tray, the menu will pop up.



Open Setting Window : Open the settings window. This function is the same as left clicking the icon.


Auto startup : This program will run automatically when the computer is turned on.

Start on device inserted : After the receiver is inserted, the software runs automatically.

Delete this program : Quit and delete itself from computer. (If we plug the receiver again, the APP will be downloaded and run again, unless “Start on device inserted” is closed).

6. Status of APP Icon

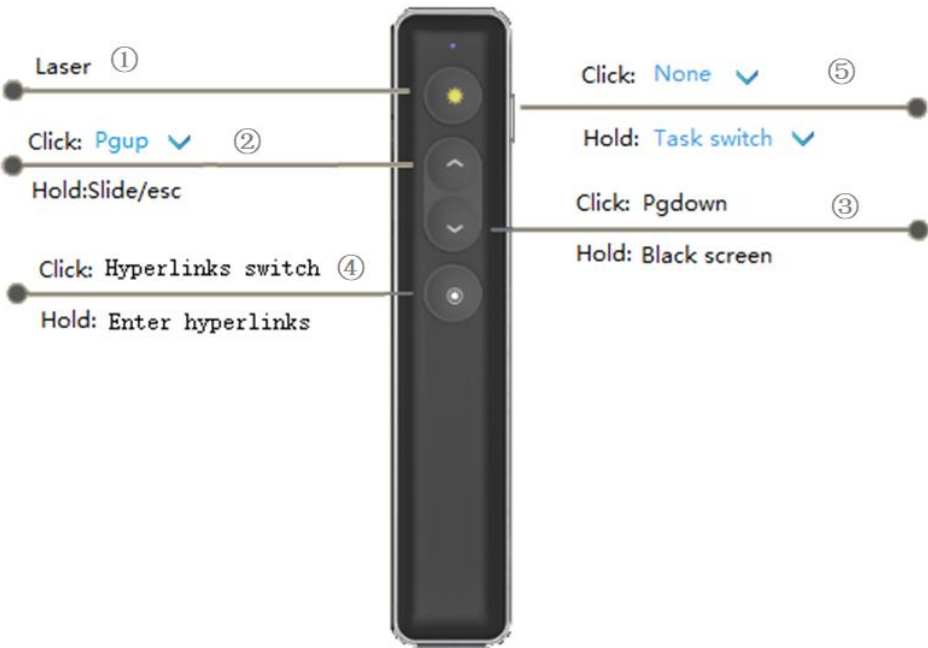
The icon  represents a stable connection. Click it to enter the setting window.

The icon  represents an abnormal connection means presenter is not turned on or the receiver is not inserted into USB port of computer.

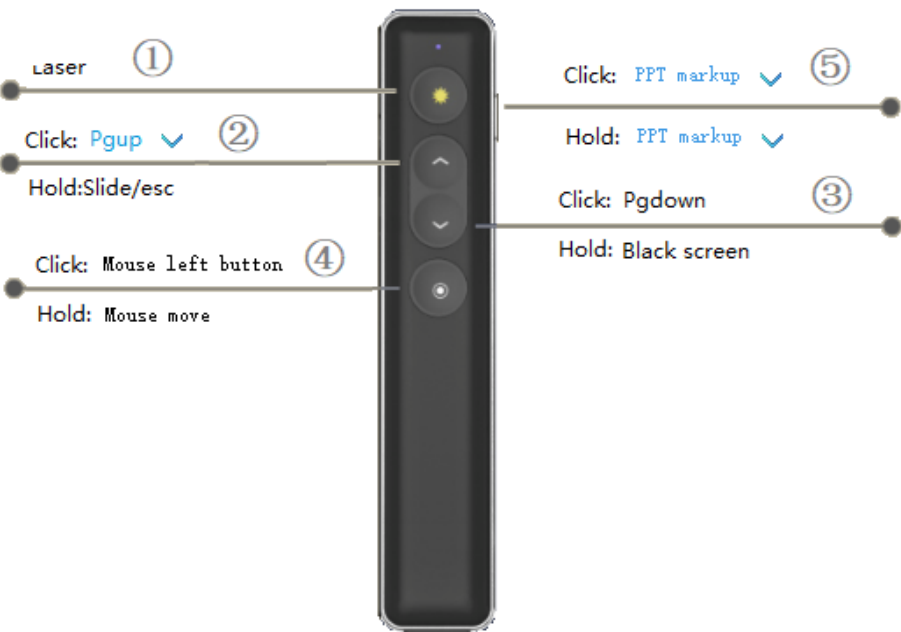
Keys Description

1. Single Key

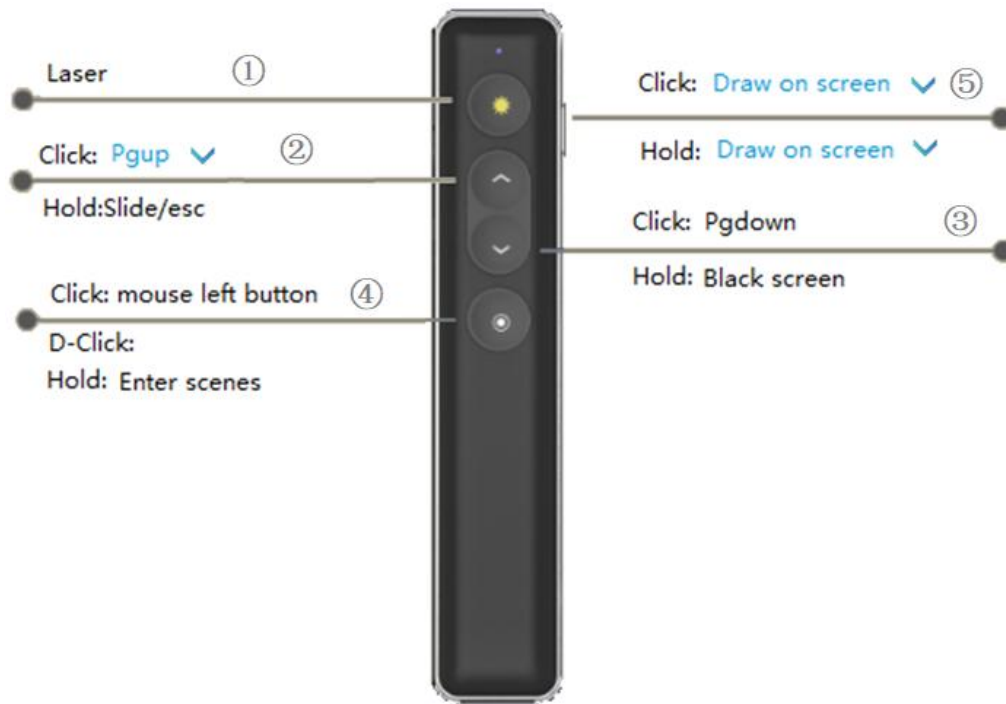
1.1 H90 Standard version



1.2 H90 Air mouse version



1.3 H90S



The blue part above is optional. See "[Key Settings](#)" for details.

2. Combination Keys

- A) Press and hold key ④ for one second and then press the key ② simultaneously to reduce the aperture of current scene.
- B) Press and hold key ④ for one second and then press the key ③ simultaneously to enlarge the aperture of current scene.

3. Combination Keys before Starting

- A) Press and hold key ① + key ④ and turn on the presenter. The red light indicates it is in the calibration status. (it is useful when mouse movement and gestures are inconsistent) See "[Circles Drifts in Scene Mode](#)" for details.
- B) Press and hold the key ② + key ③, and then turn on the presenter. The red-light double flash five times means the presenter is in wireless re-pair mode. See "[Re-pair with Receiver](#)" for details.
- C) Press and hold the key ④ and then turn on the presenter. The computer will open the download website of technical support.

Re-pair with Receiver

- A) Press and hold the key② + key③, and then turn on the presenter. The red-light double flash five times means the presenter is in wireless re-pair mode.
- B) Plug in USB receiver, turn on the presenter, press and hold the key③ and move it close to the receiver (in 20cm). The re-pair is successful if the computer has any reaction.

Indicator

1. Residual Electricity Displayed after Turn on
The light will be on for 5 seconds after turning it on. The greener means the more residual electricity, the redder means the less residual electricity. The red-light blinks, which means the battery is dead, and we need to charge it by type-c charging cable as same as Android phones.
2. Charge light indication
The red light is always on when charging, and the green light is on when full.

Special Cases

1. Nothing Happened after Starting

Please make sure:

- A) The receiver is plugged into the USB port of the computer.
- B) The battery is not out of power.

2. Presenter Is Not Working Properly

A) Make sure the battery is not out of power, the switch is turned on, and the receiver is correctly plugged into the USB port of the computer.

B) Make sure that the APP is running(H90S). even if the software is not running, the page up, page down function and the laser transmitter can still be used.

- C) Try to [re-pair it with receiver](#).

3.Circle Drifts in Scene Mode

The gyroscope sensor needs to be re-calibrated when the circle movement appears to be drifting. The operation steps are as following :

A) Press and hold key① + key④ and turn on the presenter. The red light indicates it is in the calibration status.

B) Put the presenter on the desk statically until the red-light goes out. It shows the calibration is successful.

Note: During gyroscope sensor re-calibration, the presenter cannot be placed on a shaking or slightly vibrating table.

4.No Spotlight/Magnifier/Digital-spot

Please confirm whether the APP is running.

Double-click the . EXE file to run the Windows version (if it cannot run after plugging the receiver).

In MacOS X system, we require double-click the“. dmg” file to install it before running. Some necessary configuration must be set at the first run. See "[First Run in MacOS X](#)" for details.

5.Incorrect Magnifier

- A) In MacOS X system

This is because some permissions in the "**System Preferences**" section of MacOS X are not turned on.

I) Enter "System Preferences"-->"security and privacy" -- > "Privacy"--> "**Accessibility** " and select the APP to allow this APP.

II) Enter "System Preferences"-->"security and privacy" -- > "Privacy"--> "**Screen Recording**" and select the APP to allow this APP in MacOS X 10.15 or above.

See "[First Run in MacOS X](#)" for details.

B) In Windows system

please contact customer service.